

Akagera W.G.

Open on 2023 June 25 ! Good access ! Convenience living area!

| | |
|------------------|---|
| Location | Oimachi Line 「Hatanodai Station」 8mins by walk |
| Structure | Steel-framed, 3-story building |
| Room | Single private bed Room (total 15 rooms) 7.02㎡~8.24㎡ |
| Share Area | Kitchen, Shower Room (Unisex) , Toilet (Unisex) , Living Room |
| Facility | Room: bed , desk , chair, refrigerator, curtain, AC, open wardrobe Share : microwave, laundry machine, water boiler, free internet |
| Access To School | Train : Ikebukuro Sta. 28 minutes • Takadanobaba Sta. 26 minutes • Shibuya Sta. 15 minutes • Meijijingemae Sta. 20 minutes • Nishishinjuku Sta. 36minutes |
| Notice | *Utilities (water, gas, electricity) and internet fee are included *Fees for entrance, facility management, and cleaning are paid at the first time only, no renewal fees.*Free bedding sets provided. |



©Akagera W.G.

1F



1F

2F



2F

3F



3F



※ The photos are for reference only, please refer to the actual check-in situation.

BeGood TOBUNERIMA Campus

Convenience living area! Tobunerima sta. 2mins by walk!

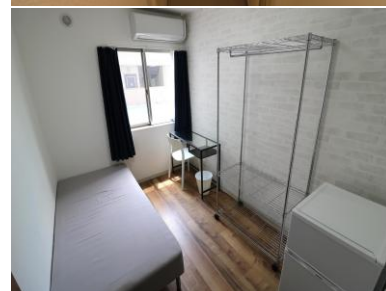
| | |
|------------------|---|
| Location | Tobu-Tojo Line 「Tobunerima Station」 2mins by walk |
| Structure | Steel frame, 3 stories |
| Room | Single private bed Room (total 20 rooms) 7.25㎡ |
| Share Area | Kitchen, Shower Room (Unisex.Women Only) , Toilet (Unisex.Women Only) , Living Room |
| Facility | Room: bed , desk , chair, refrigerator, curtain, AC, open wardrobe Share : microwave, laundry machine, water boiler, free internet |
| Access To School | Train : Ikebukuro Sta. 17 minutes • Takadanobaba Sta. 29 minutes • Shibuya Sta. 31 minutes • Meijiingomae Sta. 43 minutes • Shinjuku Sta. 30minutes |
| Notice | *Utilities (water, gas, electricity) and internet fee are included *Fees for entrance, facility management, and cleaning are paid at the first time only, no renewal fees.*Free bedding sets provided. |



1F

2F

3F



※The photos are for illustrative purposes only. Actual room facilities and layouts take precedence on-site.

BeGood Kaminakazato

New open on 2018 August 1st! Good access ! Convenience living area!

| | |
|------------------|---|
| Location | Keihin-Tohoku Line 「Kaminakazato Station」 6mins by walk |
| Structure | Steel-framed, 3-story building |
| Room | Single private bed Room (total 20 rooms) 7㎡ |
| Share Area | Kitchen, Shower Room (Unisex,Women Only) , Toilet (Unisex,Women Only) , Living Room |
| Facility | Room: bed , desk , chair, refrigerator, curtain, AC, open wardrobe Share : microwave, laundry machine, water boiler, free internet |
| Access To School | Train : Ikebukuro Sta. 14 minutes • Takadanobaba Sta. 18 minutes • Shibuya Sta. 28 minutes • Meijijingemae Sta. 36 minutes • Shinjuku Sta. 26minutes |
| Notice | *Utilities (water, gas, electricity) and internet fee are included *Fees for entrance, facility management, and cleaning are paid at the first time only, no renewal fees.*Free bedding sets provided. |



※ The photos are for reference only, please refer to the actual check-in situation.

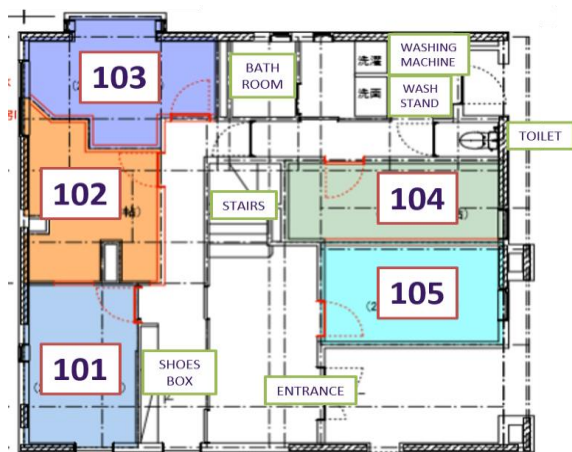
BeGood Shin-Koenji

It takes only 7 minutes by train from Shin-Koenji Station to Nishi-Shinjuku Station!

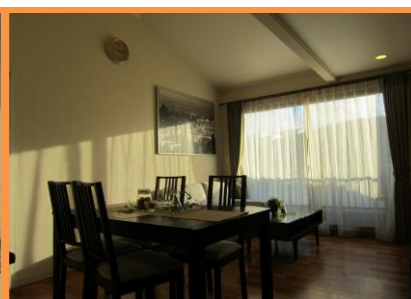
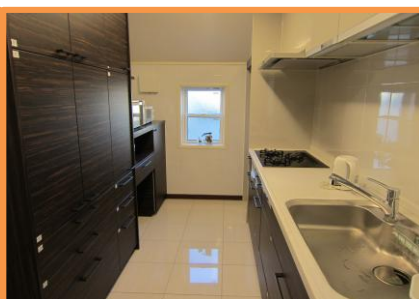
| | |
|-----------------|---|
| TOWN AREA | Shin-Koenji |
| STRUCTURE | two-story wooden building |
| ROOM | 10 × single occupancy room 7.0㎡~8.28㎡ |
| COMMON AREA | kitchen, bath room(Unisex), toilets(Unisex) |
| FACILITIES | room : bed, desk, chair, A/C, fridge, curtain, closet common area : microwave, electric kettle, washing machine(free), Internet(free) |
| NEAREST STATION | 5 min walk to Shin-Koenji Sta on Marunouchi Line |
| COMMUTE | 26 min to Ikebukuro Sta/27 min to Takadanobaba sta/ 28 min to Harajuku sta/ 25 min to Shibuya sta/7 min to Nishi-Shinjuku sta |
| NOTE | *Utilities (water, gas, electricity) and internet fee are included *Fees for entrance, facility management, and cleaning are paid at the first time only, no renewal fees.*Free bedding sets provided. |



1F



2F



BeGood IKEBUKURO Honcho

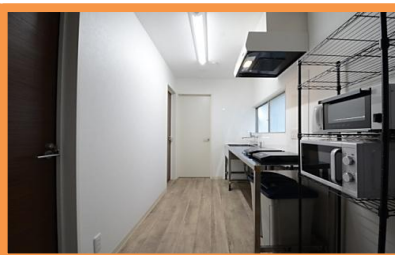
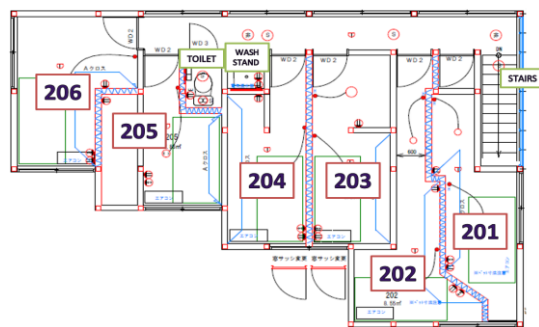
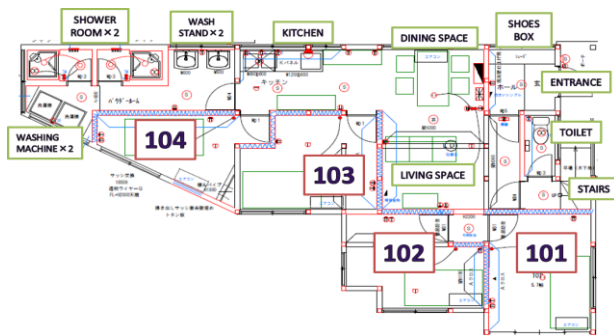
Close to the station with excellent access to the city center!

| | |
|-----------------|---|
| TOWN AREA | Itabashi |
| STRUCTURE | two-story wooden building |
| ROOM | 10 × single occupancy room 7.45m ² ~8.55m ² |
| COMMON AREA | kitchen, shower room(Unisex), toilets(Unisex) |
| FACILITIES | room : bed, desk, chair, A/C, fridge, curtain, closet common area : microwave, electric kettle, washing machine(free), Internet(free) |
| NEAREST STATION | 6 min walk to Itabashi Sta on Saikyo Line |
| COMMUTE | 4 min to Ikebukuro Sta/10 min to Takadanobaba sta/ 20 min to Harajuku sta/ 16 min to Shibuya sta/21 min to Nishi-Shinjuku sta |
| NOTE | *Utilities (water, gas, electricity) and internet fee are included *Fees for entrance, facility management, and cleaning are paid at the first time only, no renewal fees.*Free bedding sets provided. |



1F

2F



※Photos are for illustrative purposes only. Room facilities and layouts are subject to change without notice.

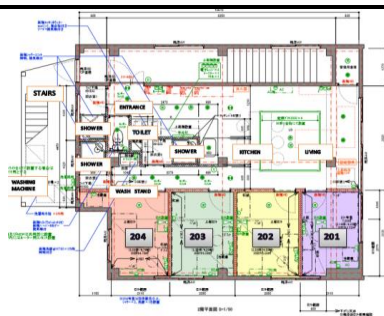
BeGood Toyocho Ekimae

New open on 2019 February 1st! Good access ! Convenience living area!

| | |
|------------------|---|
| Location | Tozai Line 「Toyocho Station」 5mins by walk |
| Structure | Steel-framed, 5-story building |
| Room | Single private bed Room (total 24 rooms) 7.08㎡~8.57㎡ |
| Share Area | Kitchen, Shower Room (Unisex, Women Only), Toilet (Unisex), Living Room |
| Facility | Room: bed, desk, chair, refrigerator, curtain, AC, open wardrobe Share : microwave, laundry machine, water boiler, free internet |
| Access To School | Train : Ikebukuro Sta. 34 minutes • Takadanobaba Sta. 27 minutes • Shibuya Sta. 6 mintes • Meijijingemae Sta. 37 minutes • Nishishinjuku Sta. 40minutes |
| Notice | *Utilities (water, gas, electricity) and internet fee are included *Fees for entrance, facility management, and cleaning are paid at the first time only, no renewal fees.*Free bedding sets provided. |



2F



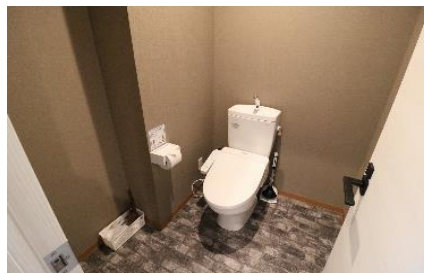
4F



3F



5F



※ The photos are for reference only, please refer to the actual check-in situation.

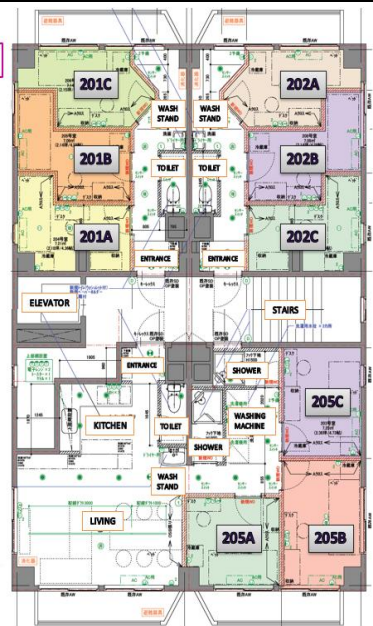
BeGood Monzen-nakacho

New open on 2017 September 15th! Good access ! Convenience living area!

| | |
|------------------|---|
| Location | Toei-Oedo Line Tozai Line 「Monzen-nakacho Station」 5mins by walk |
| Structure | Steel-reinforced concrete structure, 9 stories |
| Room | Single private bed Room (total 15 rooms) 7.04㎡~7.59㎡ |
| Share Area | Kitchen, Shower Room (Unisex) , Toilet (Unisex) , Living Room |
| Facility | Room: bed , desk , chair, refrigerator, curtain, AC, open wardrobe Share : microwave, laundry machine, water boiler, free internet |
| Access To School | Train : Ikebukuro Sta. 30 minutes • Takadanobaba Sta. 22 minutes • Shibuya Sta. 30 minutes • MeijiingelMae Sta. 33 minutes • Nishishinjuku Sta. 35minutes |
| Notice | *Utilities (water, gas, electricity) and internet fee are included *Fees for entrance, facility management, and cleaning are paid at the first time only, no renewal fees.*Free bedding sets provided. |



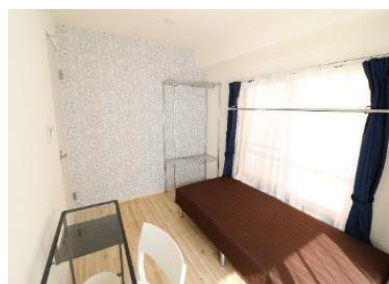
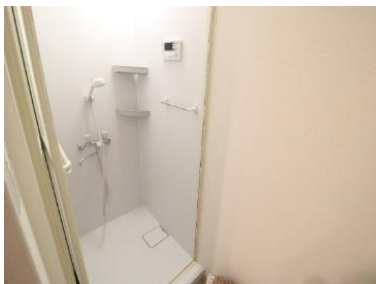
2F



3F



9F



※ The photos are for reference only, please refer to the actual check-in situation.

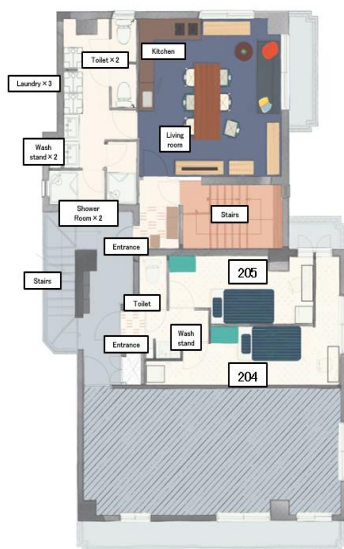
BeGood Shimokitazawa

| | |
|------------------|---|
| Location | Setagaya Ku, Odakyu Line • Higashi-Kitazawa Sta. 4 min. Walk |
| Structure | Reinforced concrete (RC) 3-story building |
| Room | Single private bed room (total 15 rooms) 7.04㎡~7.73㎡ |
| Share Area | Kitchen, Shower Room (Unisex), Toilet (Unisex), Living Room |
| Facility | Room: Bed, Desk, Chair, Refrigerator, Curtain, AC, Clothes Self. Share : microwave, laundry machine, water boiler, WIFI |
| Access To School | Train: Meiji-Jingumae Station 9 minutes, Shibuya Station 10 minutes, Nishi-Shinjuku Station 19 minutes, Ikebukuro Station 19 minutes, Takadanobaba Station 21 minutes |
| Notice | *Utilities (water, gas, electricity) and internet fee are included *Fees for entrance, facility management, and cleaning are paid at the first time only, no renewal fees.*Free bedding sets provided. |

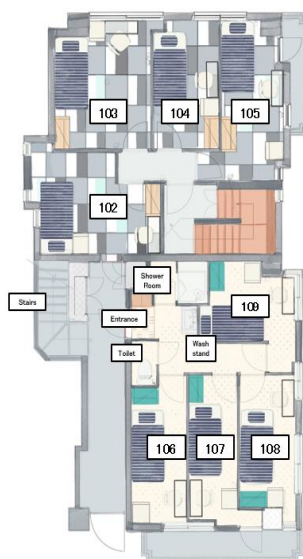


【間取り図】

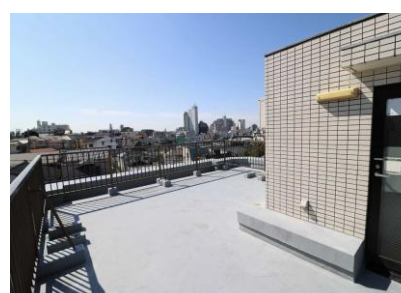
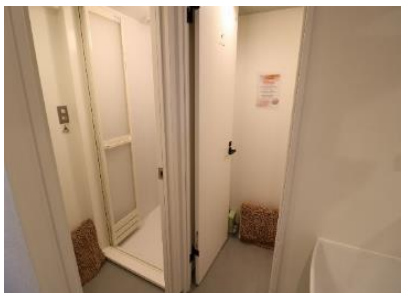
1F



2F



3F



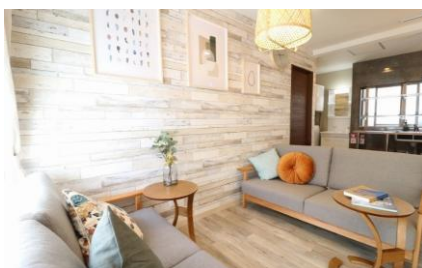
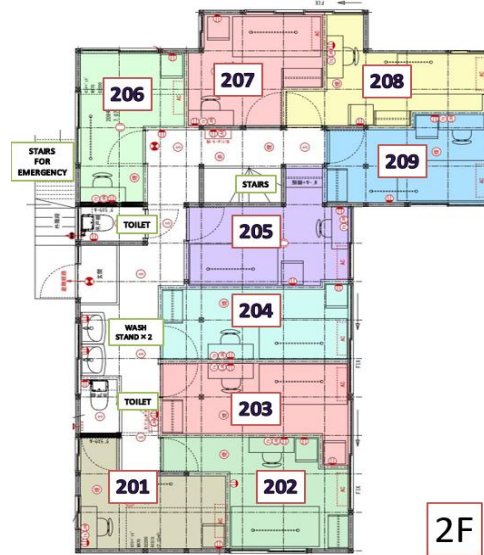
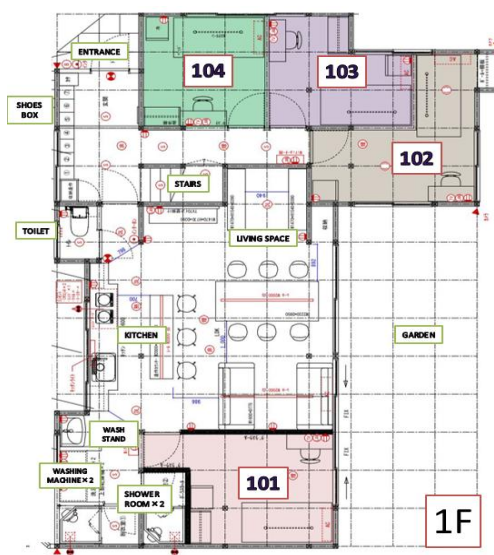
BeGood Sakurashinmachi

A 2-story wooden building with a courtyard and well!

| | |
|------------------|---|
| Location | Setagaya Ku, Denentoshi Line SakuraShinmachi Sta. 5 mins by Walking |
| Structure | Two-story wooden building |
| Room | Single private bed room (total 13 rooms) 7.02㎡~7.88㎡ |
| Share Area | Kitchen, Shower Room (Unisex) , Toilet (Unisex, Women Only) , Living Room |
| Facility | Room: Bed , Desk , Chair, Refrigerator, Curtain, AC, Clothes Self . Share : microwave, laundry machine, water boiler, WIFI |
| Access To School | Train: Meiji-Jingumae (Harajuku) Station 23 minutes, Shibuya Station 11 minutes, Nishi-Shinjuku Station 34 minutes, Ikebukuro Station 28 minutes, Takadanobaba Station 27 minutes |
| Notice | *Utilities (water, gas, electricity) and internet fee are included *Fees for entrance, facility management, and cleaning are paid at the first time only, no renewal fees.*Free bedding sets provided. |



【間取り図】



※ The photos are for reference only, please refer to the actual check-in situation.

BeGood Zoshigaya Ekimae

New open on 2019 September 17th! Good access to school! Convenience living area!

| | |
|------------------|--|
| Area | Zoshigaya |
| Structure | Steel-framed, 4-story building |
| Room | Single private bed Room (total 95 rooms) 7~8.4㎡ |
| Share Area | Kitchen, Shower Room (Unisex:Women Only), Toilet (Unisex:Women Only) |
| Facility | Room: bed , desk , chair, refrigerator, curtain, AC, open wardrobe Share : microwave, laundry machine, water boiler, free internet |
| Location | Tokyo Metro Fukutoshin Line 「Zoshigaya Station」 5mins by |
| Access To School | Train : Ikebukuro Sta. 3 minutes • Shibuya Sta. 13 minutes • MeijijingMae Sta. 11 minutes • Nishishinjuku Sta. 17 minute • Walk to Takadanobaba Sta. 17 minutes |
| Notice | *Utilities (water, gas, electricity) and internet fee are included *Fees for entrance, facility management, and cleaning are paid at the first time only, no renewal fees.*Free bedding sets provided. |



※The photos are for illustrative purposes only. Actual room facilities and layouts take precedence on-site.

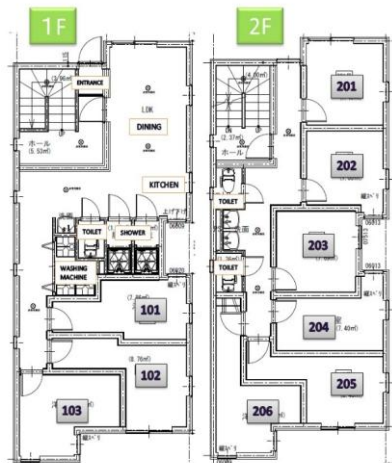
BeGood Ikebukuro II

Within walking distance of school! Great environment! Convenient transportation and shopping!

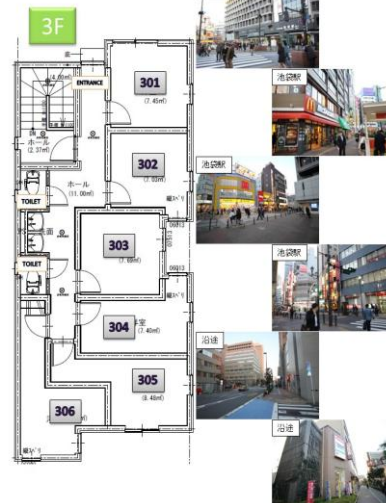
| | |
|------------------|---|
| Location | Toshima Ku, Ikebukuro Sta. 9mins by walking |
| Structure | Steel-framed, 3-story building |
| Room | Single private bed room (total 15 rooms) 7.03㎡~8.48㎡ |
| Share Area | Kitchen, Shower Room (Unisex), Toilet (Unisex, Women Only), Living Room, Study Room |
| Facility | Room: bed, desk, chair, refrigerator, curtain, AC, Wardrobe Share : microwave, laundry machine, water boiler, WIFI |
| Access To School | Train : Takadanobaba Sta. 4 minutes • Shibuya Sta. 11 minutes • MeijijinguMae Sta. 14 minutes • Nishi-Shinjuku Sta. 11 minutes |
| Notice | *Utilities (water, gas, electricity) and internet fee are included *Fees for entrance, facility management, and cleaning are paid at the first time only, no renewal fees.*Free bedding sets provided. |



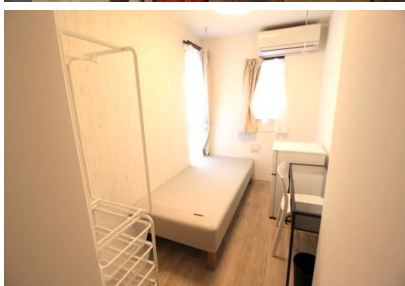
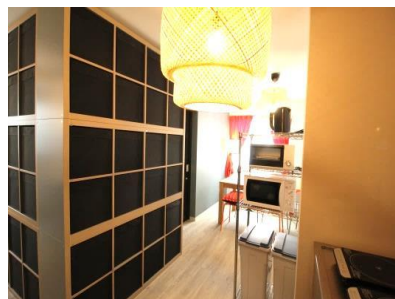
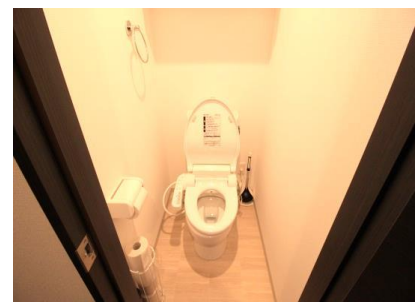
間取図



間取図



駅周辺・道のり



※ The photos are for reference only, please refer to the actual check-in situation.

BeGood KitaAkabane-Ekimae

| | |
|------------------|---|
| Location | KitaAkabane(Kita Ku) / Saikyo Line KitaAkabane Sta. 4mins by walking |
| Structure | Steel-framed, 4-story building |
| Room | Single private bed room (total 10 rooms) 7.03㎡~7.7㎡ |
| Share Area | Kitchen, Shower Room (Unisex) , Toilet (Unisex, Men/Women Only) , Living Room, Study Room |
| Facility | Room: bed , desk , chair, refrigerator, curtain, AC, Wardrobe . Share : microwave, washing and drying machine, water boiler, WIFI |
| Access To School | Train : Ikebukuro Sta. 12 minutes • Takadanobaba Sta. 20 minutes • Shibuya Sta. 24 minutes • Shinjuku Sta. 16 minutes • Harajuku Sta. 25 minutes |
| Notice | *Utilities (water, gas, electricity) and internet fee are included *Fees for entrance, facility management, and cleaning are paid at the first time only, no renewal fees.*Free bedding sets provided. |

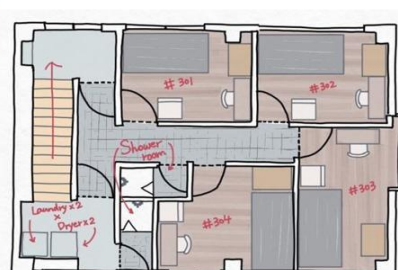


【間取り図】

1F



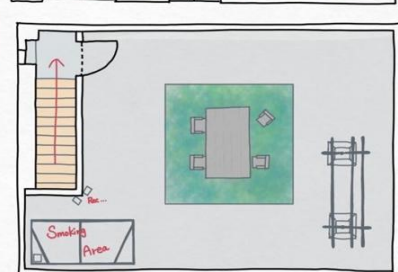
3F



2F



4F



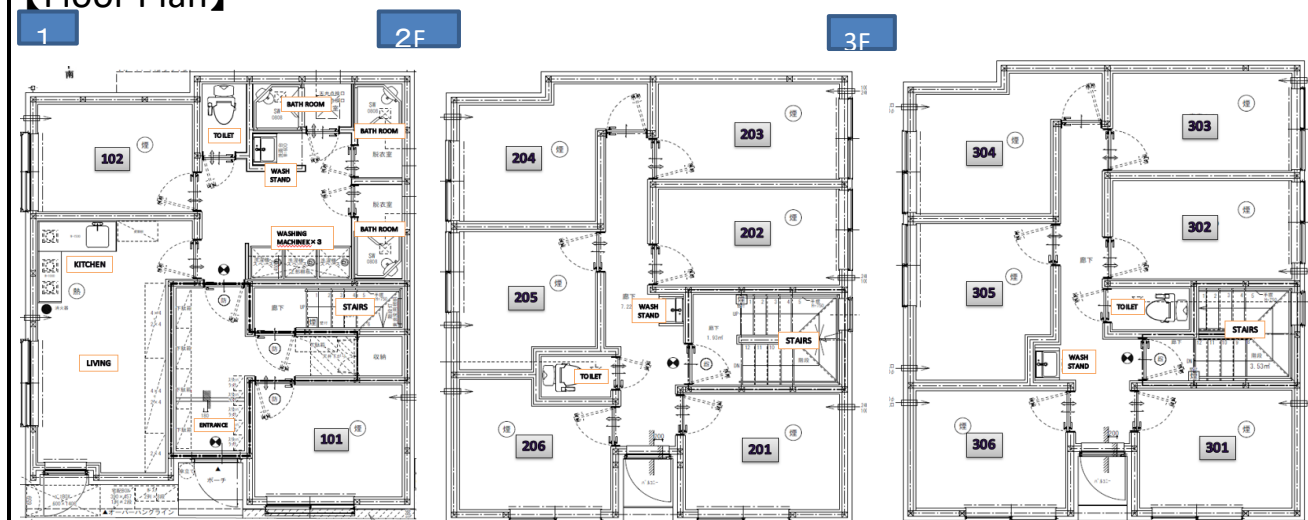
※ The photos are for reference only, please refer to the actual check-in situation.

BeGood MeidaimaeEkimae

| | |
|------------------|---|
| Location | Suginami Ku / Inokashira Line ・ Keio Line Meidaimae Station 4 min. Walk |
| Structure | Three-story wooden building |
| Room | Single private bed room (total 14 rooms) 7m ² ~7.88m ² |
| Share Area | Kitchen, Shower Room (Unisex) , Toilet (Unisex) , Living Room |
| Facility | Room: Bed , Desk , Chair, Refrigerator, curtain, AC, Clothes Self . Share : microwave, laundry machine, water boiler, WIFI |
| Access To School | Train: Meiji-Jingumae (Harajuku) 19 minutes, Shibuya Station 12 minutes, Shinjuku Station 7 minutes, Ikebukuro Station 26 minutes, Takadanobaba Station 22 minutes |
| Notice | *Utilities (water, gas, electricity) and internet fee are included *Fees for entrance, facility management, and cleaning are paid at the first time only, no renewal fees.*Free bedding sets provided. |



【Floor Plan】



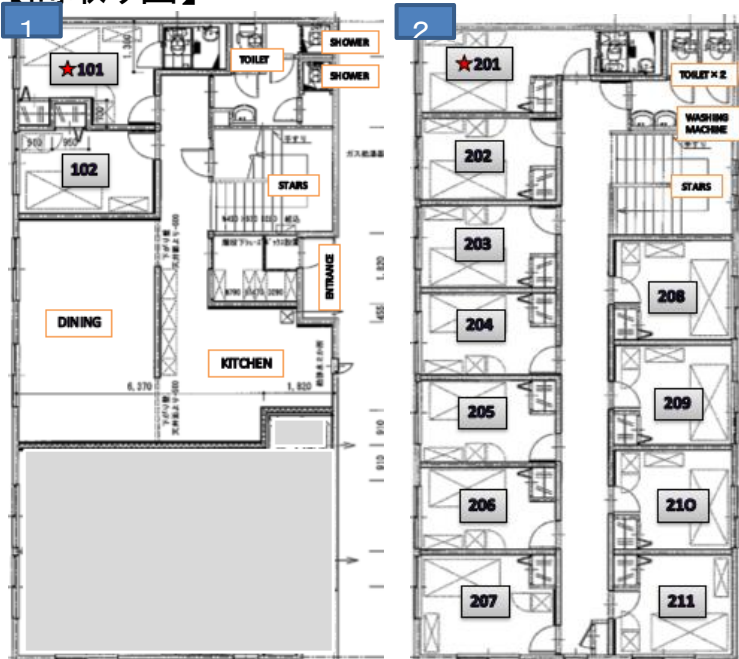
※ The photos are for reference only, please refer to the actual check-in situation.

BeGood Nogata

| | |
|------------------|---|
| Location | Nogata (Nakano Ku) / SeibuShinjuku Line Nogata Station 7 min. Walk |
| Structure | Steel frame, 2 stories |
| Room | Single private bed room (total 13 rooms) 8.28㎡~9.94㎡ |
| Share Area | Kitchen, Shower Room (Unisex) , Toilet (Unisex) , Living Room, Study Room |
| Facility | Room: bed , desk , chair, refrigerator, curtain, AC, Wardrobe . Share : microwave, laundry machine, water boiler, WIFI |
| Access To School | Train: Takadanobaba Station 16 minutes, Ikebukuro Station 27 minutes, Seibu Shinjuku Station 13 minutes, Harajuku Station 24 minutes, Shibuya Station 26 minutes |
| Notice | *Utilities (water, gas, electricity) and internet fee are included *Fees for entrance, facility management, and cleaning are paid at the first time only, no renewal fees.*Free bedding sets provided. |



【間取り図】



※ The photos are for reference only, please refer to the actual check-in situation.

FlatShare SHIN-OTSUKA Campus

New open on 2018 September 20th! Good access to school ! Convenience living area!

| | |
|------------------|---|
| Location | Marunouchi Line 「Shin-Otsuka Station」 8mins by walk Yamanote Line 「Otsuka Station」 13mins by walk |
| Structure | Steel-framed, 3-story building |
| Room | Single private bed Room (total 54 rooms) 7.5㎡ |
| Share Area | Kitchen, Shower Room (Unisex, Women Only) , Toilet (Unisex, Women Only) , Living Room, Study Room |
| Facility | Room: bed , desk , chair, refrigerator, curtain, AC, open wardrobe Share : microwave, laundry machine, water boiler, free internet |
| Access To School | Train : Ikebukuro Sta. 3 minutes • Takadanobaba Sta. 13 minutes • Shibuya Sta. 21 minutes • Meijijingemae Sta. 25 minutes • Nishishinjuku Sta. 36 minutes |
| Notice | *Utilities (water, gas, electricity) and internet fee are included *Fees for entrance, facility management, and cleaning are paid at the first time only, no renewal fees. *Free bedding sets provided. |



※The photos are for illustrative purposes only. Actual room facilities and layouts take precedence on-site.

FlatShare NARIMASU Campus

New open on 2017 September 15th!

| | |
|------------------|---|
| Location | Tobu-Tojo Line 「Narimasu Station」 6mins by walk Yurakucho Line 「Chikatetsu-Narimasu Station」 10mins by walk |
| Structure | Light steel frame, 3 stories |
| Room | Single private bed Room (total 19 rooms) 7m ² |
| Share Area | Kitchen, Shower Room (Unisex) , Toilet (Unisex,Women Only) , Living Room |
| Facility | Room: bed , desk , chair, refrigerator, curtain, AC, open wardrobe Share : microwave, laundry machine, water boiler, free internet |
| Access To School | Train : Ikebukuro Sta. 12 minutes • Takadanobaba Sta. 22 minutes • Shibuya Sta. 28 minutes • Meijijingemae Sta. 32 minutes • Nishishinjuku Sta. 34minutes |
| Notice | *Utilities (water, gas, electricity) and internet fee are included *Fees for entrance, facility management, and cleaning are paid at the first time only, no renewal fees.*Free bedding sets provided. |

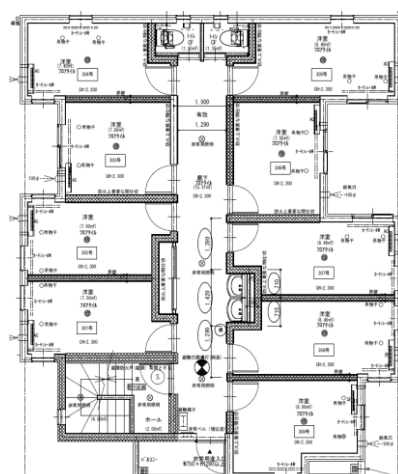
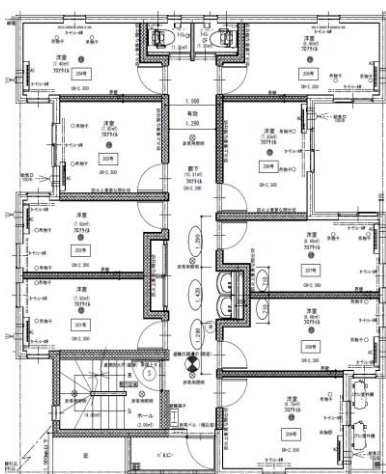
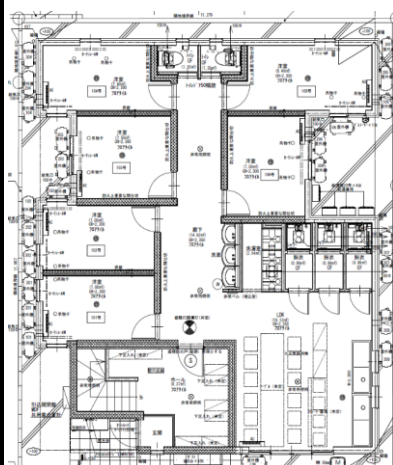


※The photos are for illustrative purposes only. Actual room facilities and layouts take precedence on-site.

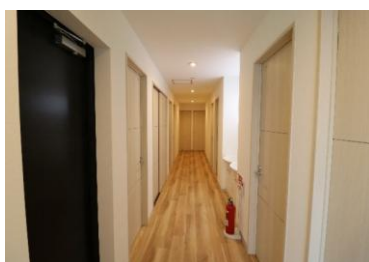
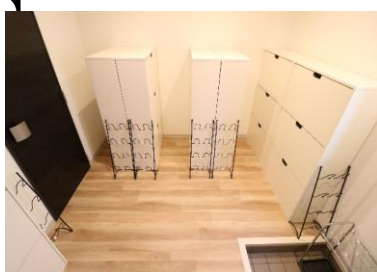
FlatShare OTSUKA Port

Good access to school ! Convenience living area!

| | |
|------------------|---|
| Area | Ikebukuro |
| Structure | Steel-framed, 3-story building |
| Room | Single private bed Room (total 24 rooms) 7~8.46㎡ |
| Share Area | Kitchen, Shower Room (Unisex) , Toilet (Unisex) |
| Facility | Room: bed , desk , chair, refrigerator, curtain, AC, open wardrobe |
| | Share : microwave, laundry machine, water boiler, free internet |
| Location | Yamanote Line 「Otsuka Station」 7mins by walk Tokyo Metro Y ūrakuch ō Line 「Higashi-Ikebukuro Station」 10mins by walk |
| Access To School | Train : Ikebukuro Sta. 3 minutes • Takadanobaba Sta. 7 minutes • Shibuya Sta. 18 minutes • Meijiing Mae Sta. 16 minutes • Nishishinjuku Sta. 17 minutes |
| Notice | *Utilities (water, gas, electricity) and internet fee are included *Fees for entrance, facility management, and cleaning are paid at the first time only, no renewal fees.*Free bedding sets provided. |



【Photos

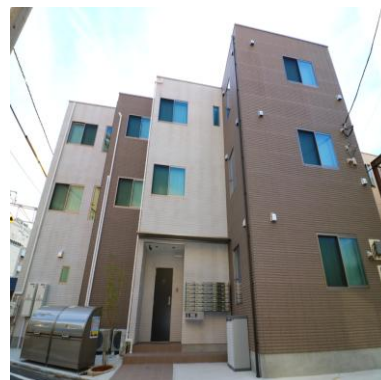


※The photos are for illustrative purposes only. Actual room facilities and layouts take precedence on-site.

FlatShare Kita-Ikebukuro Port

Only 1 station, 1 minute to Ikebukuro! Convenient for transportation and shopping!

| | |
|------------------|---|
| Location | Ikebukuro (4 minutes walk from Kita-Ikebukuro Station on the Tobu Tojo Line) |
| Structure | Steel-framed, 3-story building |
| Room | Single private bed room (total 34 rooms) 7.3㎡~8㎡ |
| Share Area | Kitchen, Shower Room (Unisex, Women Only), Toilet (Unisex, Women Only), Living Room, Study Room |
| Facility | Room: bed, desk, chair, refrigerator, curtain, AC, Wardrobe Share : microwave, laundry machine, water boiler, WIFI |
| Access To School | Train : Ikebukuro Sta. 1 minute • Takadanobaba Sta. 6 minutes • Nishi-Shinjuku Sta. 18 minutes • Harajuku Sta. 15 minutes • Shibuya 17 minutes |
| Notice | *Utilities (water, gas, electricity) and internet fee are included *Fees for entrance, facility management, and cleaning are paid at the first time only, no renewal fees.*Free bedding sets provided. |



It is located next to the train track

【Floor Plan】 1F

※ The photos are for reference only, please refer to the actual check-in situation.

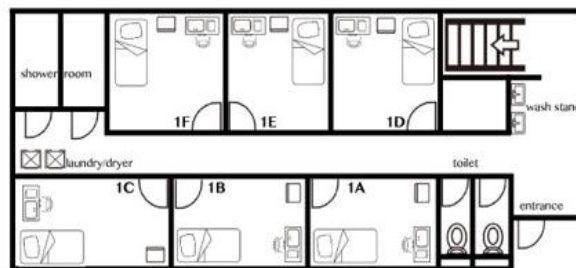
kitazawa One

RE-Open on 2023 February 1 ! Good access ! Convenience living area!

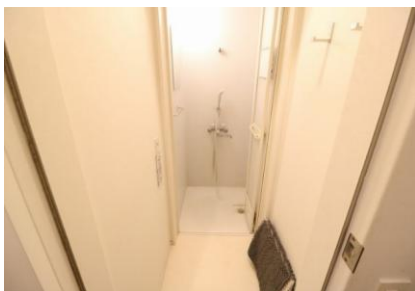
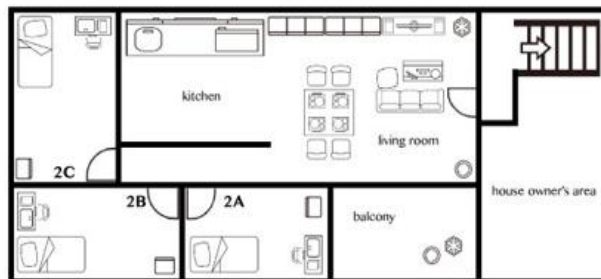
| | |
|------------------|---|
| Location | Keio inokashira Line 「Ikenoue Station」 3mins by walk |
| Structure | Wooden, 2-story building |
| Room | Single private bed Room (total 9 rooms) 7㎡ |
| Share Area | Kitchen, Shower Room , Toilet (Unisex) , Living Room (Unisex) |
| Facility | Room: bed , desk , chair, refrigerator, curtain, AC, open wardrobe Share : microwave, laundry machine, water boiler, free internet |
| Access To School | Train : Ikebukuro Sta. 18 minutes • Takadanobaba Sta. 14 minutes • Shibuya Sta. 6 minutes • Meijijingemae Sta. 7 minutes • Nishi-Shinjuku Sta. 12minutes |
| Notice | *Utilities (water, gas, electricity) and internet fee are included *Fees for entrance, facility management, and cleaning are paid at the first time only, no renewal fees.*Free bedding sets provided. |



1F



2F



※ The photos are for reference only, please refer to the actual check-in situation.

TCRE Shimoikusa

Beautiful residential area! Good environment! Convenient transportation and shopping!

| | |
|------------------------------|--|
| location | Shimoikusa |
| structure | Wooden two-story building |
| room | Room approx. 17.44㎡ Living room approx. 10㎡ |
| facility | Bathroom, toilet, kitchen, storage room, intercom |
| equipment | Bed, table and chair, air conditioner, washing machine, microwave, refrigerator, |
| traffic | 6 minutes walk from Shimoikusa Station on the Seibu Shinjuku Line |
| Means of commuting to school | from Shimoikusa Station: Seibu Shinjuku Station 21 minutes, Takadanobaba Station 18 minutes, Ikebukuro Station 28 minutes, Harajuku Station 35 minutes, Shibuya Station 38 minutes |
| remarks | *Utilities (water, gas, electricity) and internet fee are included *Fees for entrance, facility management, and cleaning are paid at the first time only, no renewal fees within 2 years. *Free bedding sets provided. |

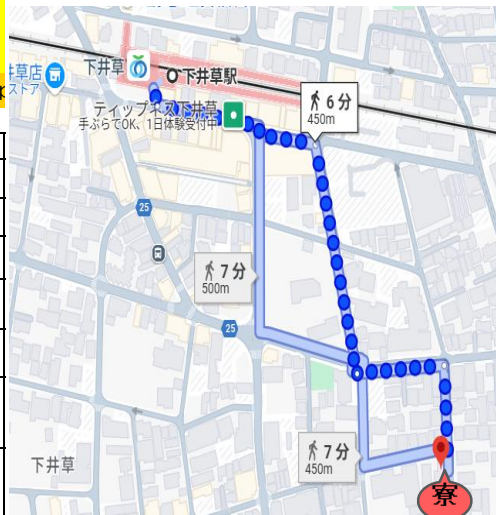


Image Photo

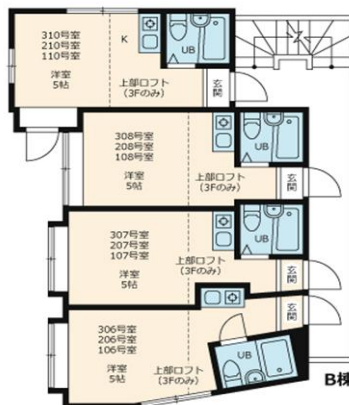
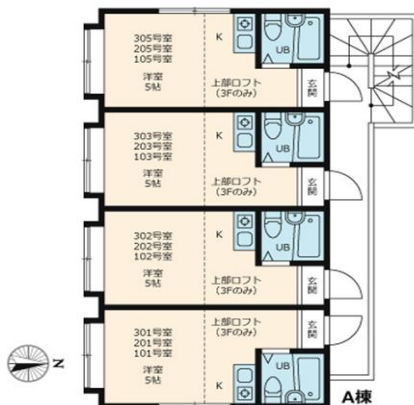


* The photo is for illustrative purposes only. Indoor facilities and layouts are given priority on site.

TCREhatudai

Cheap Static Residential Area! Good environment! Convenient transportation!

| | |
|------------------------------|---|
| location | Hatsudai (Shinjuku ward) |
| structure | Wood and reinforced concrete construction, 3 floors |
| room | 1 room 10.14㎡~10.43㎡ |
| Common area | Coin laundry, bicycle parking |
| equipment | BED, DESK, CHAIR, REFRIGERATOR, MICROWAVE, air conditioner |
| traffic | 7 minutes walk from Hatsudai Station on the Toei Shinjuku Line |
| Means of commuting to school | From Hatsudai Station on the Toei Shinjuku Line: 2 minutes to Shinjuku, 21 minutes to Shibuya, 20 minutes to Harajuku Station, 24 minutes to Ikebukuro Station, 21 minutes to Takadanobaba Station |
| remarks | <p>*Utilities (water, gas, electricity) and internet fee are included</p> <p>*Fees for entrance, facility management, and cleaning are paid at the first time only, no renewal fees within 2 years.</p> <p>*Free bedding sets provided.</p> |



* The photo is for illustrative purposes only. Indoor facilities and layouts are given priority on site.

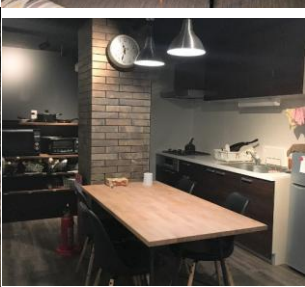
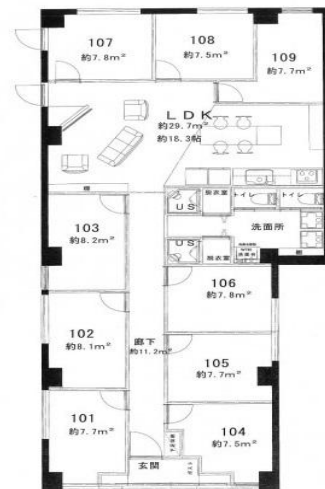
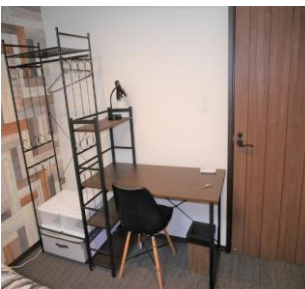
eharamannsyonn (female only)

Peaceful residential area! Good environment! Convenient transportation and shopping!

| | |
|------------------------------|--|
| region | Shin-Ekoda |
| structure | Steel-framed, 3-story building |
| room | Single Room (7.17m ² ~7.27m ² :Living room 6~7m ²) |
| share facility | Bathroom, toilet, kitchen, washing machine and dryer (charge), microwave |
| equipment | In the room: Bed, table and chair, air conditioner, refrigerator, free Wi-Fi |
| traffic | 10 minutes walk from Shin-Ekoda Station on the Oedo Line, 17-minute walk from Ekoda Station on the Seibu Ikebukuro Line |
| Means of commuting to school | From Shin-Ekoda Station: 11 minutes to Nakano-sakaue Station (Shinjuku School), 29 minutes to Harajuku Station, 26 minutes to Takadanobaba Station, 30 minutes to Shibuya Station From Ekoda Station: 9 minutes to Ikebukuro Station |
| remarks | <ul style="list-style-type: none"> *Utilities (water, gas, electricity) and internet fee are included *Fees for entrance, facility management, and cleaning are paid at the first time only, no renewal fees within 2 years. *Free bedding sets provided. |



Image Photo



※ Photographs are for illustrative purposes only. Actual room facilities, layout, etc. may vary prioritizing local condition.

| SHINOKUBO | |
|-----------------|--|
| Area | Shin-Okubo |
| Structure | Steel construction, 2 stories |
| Room | Dormitory type Private room • Shared room (2 people) |
| Common area | Communication room, Shower room, Toilet, Kitchen |
| Facilities | Room : bed, desk, chair, air conditioner, refrigerator Shared : TV, washing machine, drying machine (coin-laundry), microwave, cupboard. |
| Transportation | 7 minutes walk from Shin-Okubo station on Yamanote line 4 minutes walk from Sobu Line "Okubo" Station |
| Means to School | 23 minutes walk from Takadanobaba school main building. By Train (From Shin-Okubo station): 6 minutes to Ikebukuro station, 6 minutes to Harajuku station Nishi-Shinjuku 5-chome Station 20 minutes Meiji Jingumae Station 13 minutes Shibuya Station 9 minutes * |
| Remarks | *Utilities (water, gas, electricity) and internet fee are included *Fees for entrance, facility management, and cleaning are paid at the first time only, no renewal fees. *Free bedding sets provided. |



イメージ写真

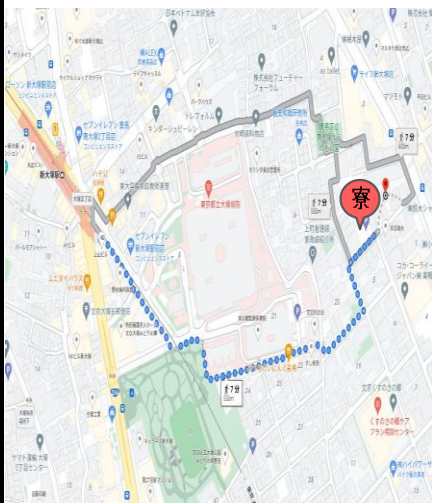


※ Photographs are for illustrative purposes only. Actual room facilities, layout, etc. may vary prioritizing local condition.

TCRE Shin-Otsuka

Safe residential area! Good environment! Convenient transportation and shopping!

| | |
|-----------------|---|
| Area | Shin-Otsuka |
| Structure | 2 floors build 【9rooms】 |
| Rooms | Single room ・ Double room |
| Facilities | Kitchen, Shower room, Toilet, Bicycles parking |
| common area | Room : Bed, Table, Chair, Air condition, Shared : Washing machine, Micro wave, Refrigerator, IH stove, |
| Tran | ● 12min on foot from Otsuka station on Yamanote Line ● 8min on foot from Shin-Otsuka station on Marunouchi Line |
| Means to school | By train (from Otsuka Station): 2 minutes from Ikebukuro Station, 7 minutes from Takadanobaba Station, 16 minutes from Harajuku Station. Shinjuku Station 12 minutes, Meiji Jingumae Station 22 minutes |
| Remarks | *Utilities (water, gas, electricity) and internet fee are included *Fees for entrance, facility management, and cleaning are paid at the first time only, no renewal fees. *Free bedding sets provided. |

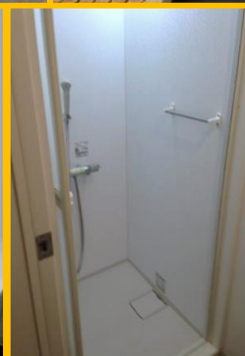
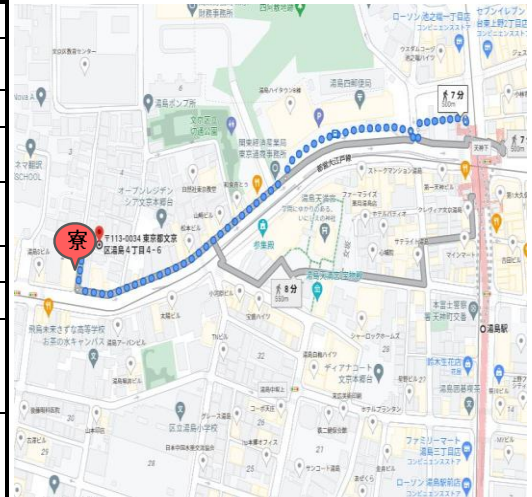


※Photographs are for illustrative purposes only. Actual room facilities, layout, etc. may vary prioritizing local condition.

Hongo 3-chome

QUIET ENVIRONMENT!!CONVENIENT TO GO ANYWHERE!

| | |
|--------------------|---|
| LOCATION | Yushima |
| BUILDING STRUCTURE | 3-story reinforced concrete building (3rd Floor only, 5LDK) |
| ROOM TYPE | single rooms 7m ² , double rooms 10~12m ² |
| COMMON AREA | kitchens, bathrooms, toilets, laundry machines, refrigerators, |
| EQUIPMENT | in each room: bed(s), desk(s), chair(s), an A/C, closet(s) shared : refrigerators, microwaves, a cupboard, free internet, washing machine |
| TO THE STA. | 6-min. walk to Marunouchi Line 「Hongo san chome」 Station 7-min. walk to ChiyodaLine 「Yushima」 Station |
| TO SCHOOL | fm Hongo san chome Sta. to Ikebukuro Sta. 10min. • Takadanobaba Sta. 19min. • MeijijingeMae Sta. 28min. • Shibuya Sta. 25min. Nishi-Shinjuku 5-chome Station 20 minutes Harajuku Station 30 minutes |
| NOTICE | *Utilities (water, gas, electricity) and internet fee are included *Fees for entrance, facility management, and cleaning are paid at the first time only, no renewal fees.*Free bedding sets provided. |

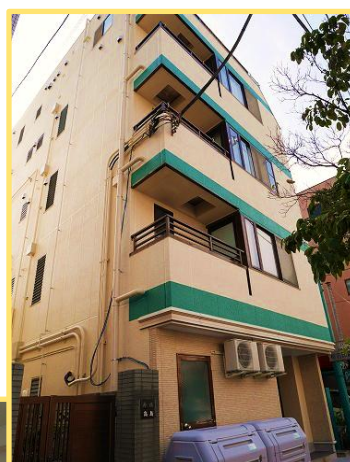
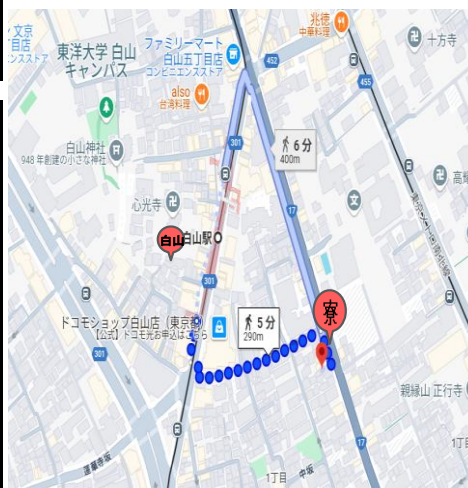


※ The photos are for illustrative purposes only.
Facilities and layouts are subject to change without notice.

T C R E HAKUSAN

good environment, very convenient for shopping and transportation

| | |
|---------------|---|
| LOCATION | Hakusan (Bunkyo ward) |
| BUILDING TYPE | Steel frame, flat roof, 5 stories |
| ROOM TYPE | Double room |
| COMMON AREA | Shower rooms, toilets, a kitchen, bicycle-parking lots |
| EQUIPMENT | each room: a bed , 1 desk , 2 chairs, an A/C, Internet shared:refrigerators, laundry machines(coins needed), microwaves, wash stands, electric kettles, an automatically lockable door. |
| TO THE STA. | 4-min. walk to Toei Mita Line 「HAKUSHAN」 station |
| TO SCHOOL | Fm HAKUSHAN Sta. to Ikebukuro Sta.16min./Takadanobaba Sta.20min./Meijiingu mae Sta. 32min./Shibuya Sta. 28min./Shinjuku Station 25 minutes Harajuku Station 29 minutes |
| NOTICE | *Utilities (water, gas, electricity) and internet fee are included *Fees for entrance, facility management, and cleaning are paid at the first time only, no renewal fees. *Free bedding sets provided. |



※ The photos are for illustrative purposes only.
Facilities and layouts are subject to change without notice.

ARANCIA IKEBUKURO

PEACEFUL!!BLESSED ENVIRONMENT!!CONVENIENT LIFE!!

| | |
|------------------------|---|
| Location | Ikebukuro |
| Structure | Reinforced concrete, 3-Storey |
| Room | 13rooms max.13㎡ min.11㎡ |
| Common Area | 4 Bathroom & 4 Toilet (Male & Female Separated),Kitchen |
| Facilities | Room: Bed,Desk,Air conditioner,Refrigerator, free wifi Shared: Washing machine(coin laundry),Microwave |
| Transport | 10 minutes walk from Ikebukuro Station East Exit (JR Yamanote Line, Marunouchi Line,Yurakucho Line,Fukutoshin Line) |
| Means to school | 18 minutes walk from ISI Ikebukuro Language school. Train (from Ikebukuro Station): JR Line Shinjuku Station 6minutes, Takadanobaba Station 4 minutes, Shibuya Station 15 minutes, Harajuku Station 13 minutes |
| Remarks | *Costs for utilities (water, gas, electricity) and internet are included. *There are no renewal costs for dormitory fees, facility management fees, and cleaning fees. *Bedding set provided free of charge. |

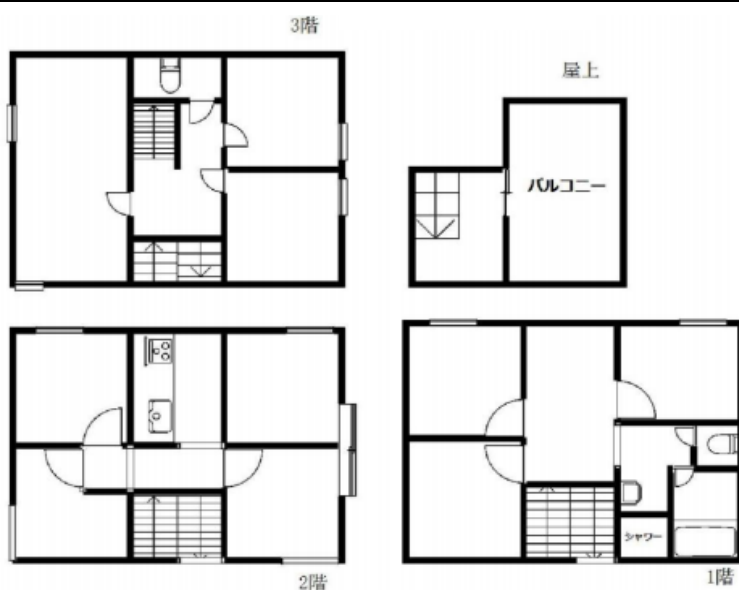


※ Photographs are for illustrative purposes only.Actual room facilities, layout, etc. may vary prioritizing local condition.

DREAM HOUSE North Shinjuku

PEACEFUL!!BLESSED ENVIRONMENT!!CONVENIENT LIFE!!

| | |
|------------|---|
| Location | Okubo |
| Structure | Steel-framed, 3-story building |
| Room | Single (up to 5 people)・Double (up to 10 people) Room area:7㎡~10㎡ |
| Shared | Kitchen, Bathroom , Toilet |
| Facilities | Within room: Bed,Desk,AC,Refrigerator,Hanger rack Shared: Microwave,Washing machine,Wifi(Free), rice cooker |
| Transport | JR Yamanote Line Shinokubo Station(10 min-walk), JR Chuo Sobu Line Okubo Station (6 min-walk) |
| To school | ISI Shinjuku 15min to walk/Fm Shin Okubo Sta. to Ikebukuro Sta. 7min. Takadanobaba Sta. 2min./Harajyuku Sta. 8min./Shibuya Sta. 11min. |
| Remarks | *Costs for utilities (water, gas, electricity) and internet are included. *There are no renewal fees for dormitory fees, facility management fees, and cleaning fees. *Bedding set provided free of charge. |

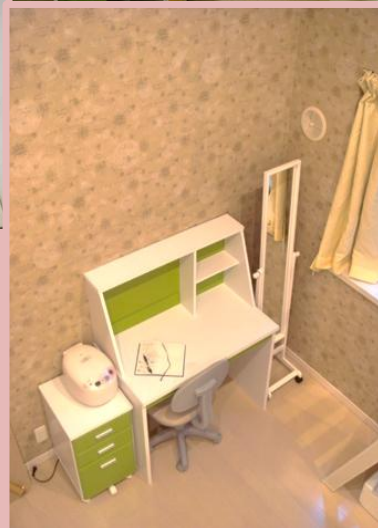


※ Photographs are for image purposes. Facilities and layout etc. showned are initial conditions.

Rosso Ikebukuro

QUIET AREA!! CONVENIENT TO GO ANYWHERE!

| | |
|--------------------|--|
| LOCATION | Ikebukuro |
| BUILDING STRUCTURE | 2-story lightweight steel skelton building |
| ROOM TYPE | 6 Studio Type Apartment (max.14.78㎡ min.13.65㎡) a bathroom , a toilet, a kitchen, and a loft space (min.5.83㎡、max.6.6㎡) |
| EQUIPMENT | desk, chair, washing machine, microwave refrigerator, A/C, free wifi |
| THE CLOSEST STA. | 5 min. walk to Ikebukuro Station, JR, Marunouchi Line, Yurakucho Line, Fukutoshin Line |
| TO SCHOOL | 5minutes walk from ISI Ikebukuro Language school. Train (from Ikebukuro Station): JR Line Shinjuku Station 6minutes, Takadanobaba Station 4 minutes, Shibuya Station 15 minutes, Harajuku Station 13 minutes. |
| NOTICE | *Utilities (water, gas, electricity) and internet fee are included *Fees for entrance, facility management, and cleaning are paid at the first time only, no renewal fees. *Free bedding sets provided |

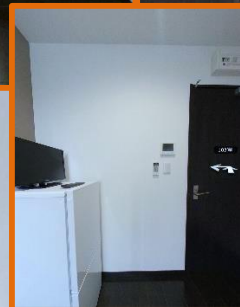
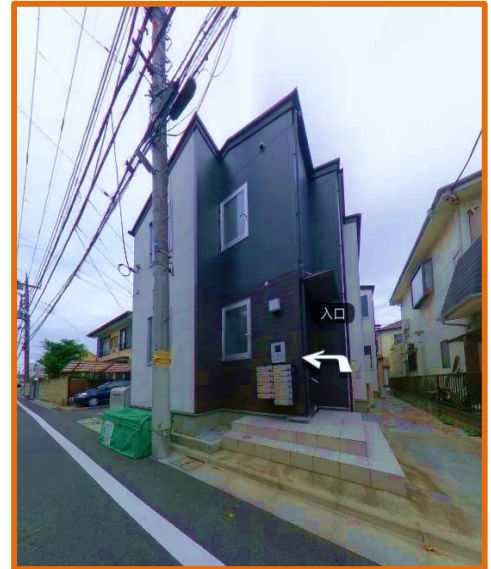


※The photos are for illustrative purposes only.
Facilities and layouts are subject to change without notice.

SA—CROSS SHIMOIGUSA 5

QUIET ENVIRONMENT!! CONVENIENT TO GO ANYWHERE!

| | |
|--------------------|---|
| LOCATION | Shimoigusa(Suginami-ku) |
| BUILDING STRUCTURE | 2-story wooden house |
| ROOM TYPE | 13 x single occupancy room room size: 7㎡ |
| COMMON FACILITIES | 2 washbasins 2 bathrooms 2 toilets 3 washing machines 3 dryer machines 2 kitchens |
| EQUIPMENT | In each room: a bed, a desk, a TV, an A/C, a refrigerator shared: microwave ovens, a rice cooker, free Internet |
| TO THE STA. | 13 minutes walk from the north exit of Shimoigusa Station on the Seibu Shinjuku Line |
| TO SCHOOL | From Shimoigusa Sta. to Takadanobaba Sta.14min./Seibu Shinjuku Sta.17min./ Ikebukuro Sta.25min./Harajuku Sta. 28min./Shibuya Sta. 30min. |
| NOTICE | *Utilities (water, gas, electricity) and Internet fee are included *Fees for entrance, facility management, and cleaning are paid at the first time only, no renewal fees. *Free bedding sets provided. |



※ The photos are for illustrative purposes only.
Facilities and layouts are subject to change without notice.

Koapurasu Mejiro

Within walking distance of school! Great environment! Convenient transportation and shopping!

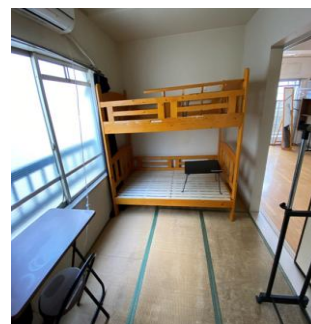
| | |
|--------------------|--|
| Location | Mejiro Sta. 9mins by walking |
| Building Structure | 3-story reinforced concrete building |
| Room | Single/Double room (total 2 rooms) 8㎡~9㎡ |
| Share Area | Kitchen, Shower Room (Unisex), Toilet (Unisex, Women Only) |
| Facility | Room: bed, desk, chair, refrigerator, curtain, AC, Wardrobe Share : microwave, laundry machine, WIFI |
| Access To School | 16 minutes walk to Ikebukuro school / Train: 4 minutes to Takadanobaba Station, 2 minutes to Ikebukuro Station, 11 minutes to Harajuku Station, 7 minutes to Shinjuku Station, 14 minutes to Shibuya Station |
| Notice | *Utilities (water, gas, electricity) and internet fee are included *Fees for entrance, facility management, and cleaning are paid at the first time only, no renewal fees.*Free bedding sets provided. |



map



single room



double room



kitchen



toilet



Washbasin



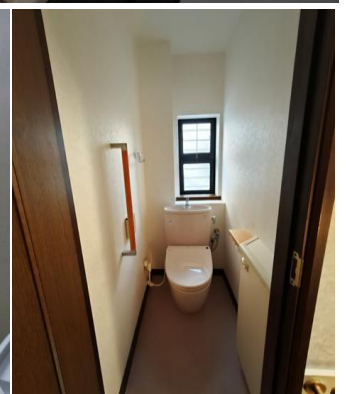
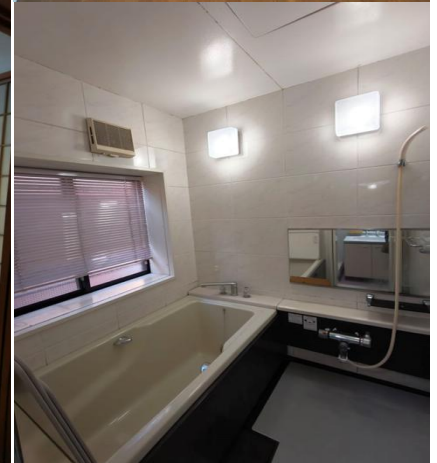
floor plan

※ The photos are for reference only, please refer to the actual check-in situation.

Ikebukuro 3 tyoume

Quiet enviroment! Convenient for commute, transportation and shopping!

| | |
|-----------------|---|
| TOWN AREA | Takadababa1tyoume (Shinjuku ward) |
| STRUCTURE | Steel frame, flat roof, 3 stories |
| ROOM | single room (4th) 、double Room(4th) room size:10~13m ² |
| COMMON AREA | kitchen(2), bathroom(2), roof balcony, toilet(3), wash basin(2), wash machine(2), storage space |
| FACILITIES | room : bed, desk,chair, A/C, closet,refrigerator common area : microwave, washing machine, Internet,kettle, |
| NEAREST STATION | 7min walk to takadababa sta on Yamanote Line& 4min walk to takadababa sta on Touzai Line subway 5min walk to niwaseda sta on Fukudoshinsen subway |
| COMMUTE | From Takadanobaba Station: Takadanobaba School 5 mins walk. Ikebukuro Station (4 minutes), Harajuku Station (10 minutes), Shibuya Station (12 minutes), Nishi-Shinjuku Station (15 minutes) |
| NOTE | *Utilities (water, gas, electricity) and internet fee are included *Fees for entrance, facility management, and cleaning are paid at the first time only, no renewal fees.*Free bedding sets provided. |



※Photos are for illustrative purposes only. Room facilities and layouts are subject to change without notice.

TAKADANOBABA HOUSE TWO

PEACEFUL!!BLESSED ENVIRONMENT!!CONVENIENT LIFE!!

| | |
|------------|---|
| Location | Takadanobaba |
| Structure | Reinforced concrete structure, 3-Storey |
| Room | Double (total to 6 people)・Single (total 4 people) Room area:7㎡~10㎡ |
| Shared | Kitchen, Bathroom, Toilet |
| Facilities | Within room: Bed,Desk,AC,Hanger rack |
| | Shared: Microwave,Washing machine,Wifi(Free), rice cooker |
| Transport | JR Yamanote Line Takadanobaba Station(7 min-walk from waseda exit) |
| To school | FmTakadanobaba Sta. to Ikebukuro Sta. 4min.Harajyuku Sta. 9min. Shibuya Sta. 11min./Seibu Shinjuku Sta. (ISI Shinjuku)3min. ISI Takadanobaba 10min to walk |
| Remarks | *Costs for utilities (water, gas, electricity) and internet are included. *There are no renewal fees for dormitory fees, facility management fees, and cleaning fees. *Bedding set provided free of charge. |

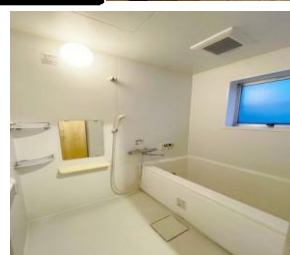
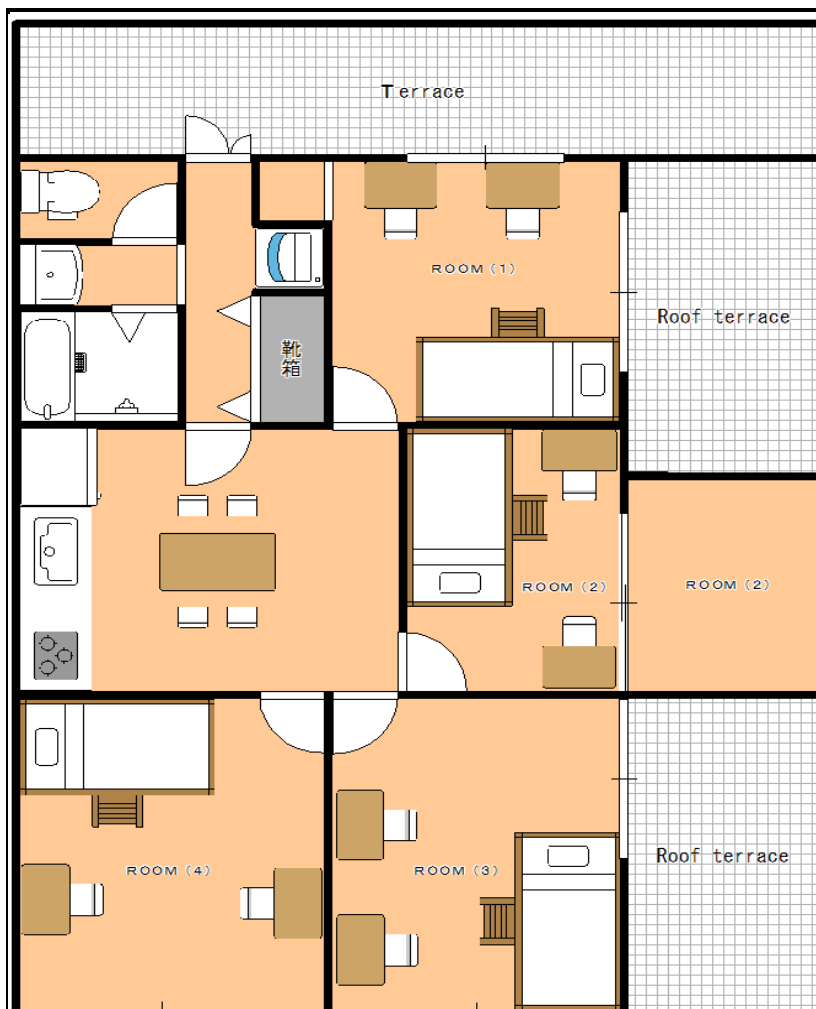
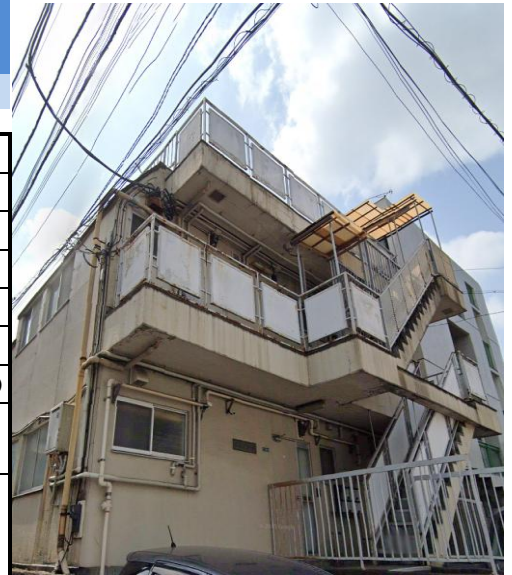


※ Photographs are for image purposes. Facilities and layout etc. showned are initial conditions.

TAKADANOBABA HOUSE ONE

PEACEFUL!!BLESSED ENVIRONMENT!!CONVENIENT LIFE!!

| | |
|------------|---|
| Location | Takadanobaba |
| Structure | Reinforced concrete structure, 3-Storey |
| Room | Double (total 8 people) Room area:10㎡~15㎡ |
| Shared | Kitchen, Bathroom, Toilet |
| Facilities | Within room: Bed,Desk,AC,Hanger rack Shared: Microwave,Washing machine,Wifi(Free), Rice Cooker |
| Transport | JR Yamanote Line Takadanobaba Station(7 min-walk from waseda exit) |
| To school | FmTakadanobaba Sta. to Ikebukuro Sta. 4min.Harajuku Sta. 9min. Shibuya Sta. 11min./Seibu Shinjuku Sta. (ISI Shinjuku)3min. ISI Takadanobaba 10min to walk |
| Remarks | *Costs for utilities (water, gas, electricity) and internet are included. *There are no renewal fees for dormitory fees, facility management fees, and cleaning fees. *Bedding set provided free of charge. |

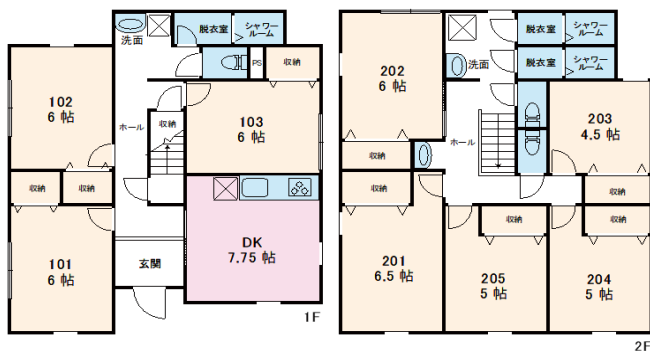


※ Photographs are for image purposes. Facilities and layout etc. showned are initial conditions.

Peace Coat Kotakemukaihara

QUIET ENVIRONMENT!!CONVENIENT TO GO ANYWHERE!

| | |
|---------------|---|
| AREA | Kotakemukaihara |
| BUILDING TYPE | 2-story wooden house |
| ROOM TYPE | Single room : 8.5㎡ Double room : 10~12㎡ |
| COMMON AREA | There are three bathrooms, three toilets and three washbasins, a shoe cupboard, a kitchen and a living room. |
| EQUIPMENT | Room: Bed (bunk bed), single bed in single room, desk, chair, air conditioner, TV, WIFI, refrigerator, closet. Shared areas: kitchen, electric kettle, washing machine, microwave (two of each), refrigerator, dining table, chairs, large |
| TO THE STA. | 4 -min. walk to Yurakucho Line「Kotakemukaihara」station. |
| TO SCHOOL | Fm Kotakemukaihara Sta. to Ikebukuro Sta. 6min. /Takadanobaba Sta. 18min./Meijijingu mae Sta. 20 min. /Shibuya Sta. 18 min. Nishi-Shinjuku 5-chome Station 30 minutes Harajuku Station 25 minutes |
| NOTICE | *Utilities (water, gas, electricity) and internet fee are included *Fees for entrance, facility management, and cleaning are paid at the first time only, no renewal fees. *Free bedding sets provided. |

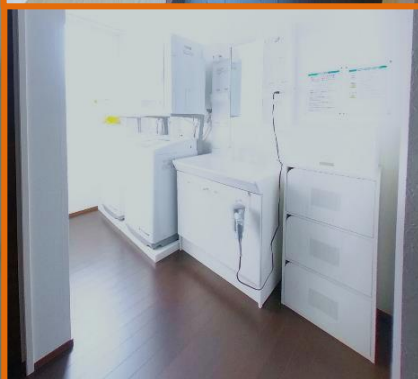
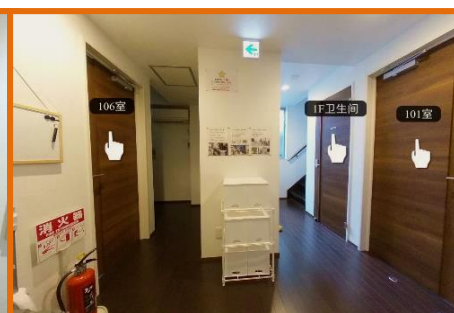
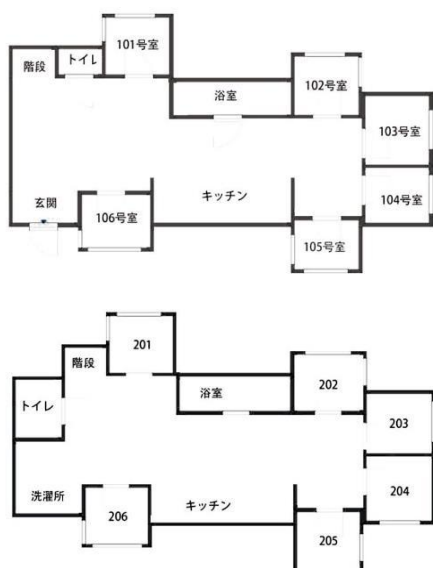


※The photos are for illustrative purposes only.
Facilities and layouts are subject to change without notice.

SA-CROSS NUMABUKURO 7

QUIET ENVIRONMENT!! CONVENIENT TO GO ANYWHERE!!

| | |
|--------------------|---|
| LOCATION | NUMABUKURO (NAKANO-KU) |
| BUILDING STRUCTURE | 2-story wooden house |
| ROOM TYPE | 12 x single occupancy room room size: 7㎡ |
| COMMON FACILITIES | 2 washbasins 2 bathrooms 2 toilets 3 washing machines 3 dryer machines 2 kitchens |
| EQUIPMENT | In each room: a bed, a desk, a TV, an A/C, a refrigerator shared: microwave ovens, a rice cooker, free Internet |
| TO THE STA. | 9-min. walk to the north exit of Seibu Shinjuku Line Numabukuro Station |
| TO SCHOOL | Fm Numabukuro Sta. to Takadanobaba Sta. 8min./Seibu Shinjuku Sta. 11min./Ikebukuro Sta. 19min./Harajuku Sta. 22min./Shibuya Sta. 24min. |
| NOTICE | *Utilities (water, gas, electricity) and Internet fee are included *Fees for entrance, facility management, and cleaning are paid at the first time only, no renewal fees. *Free bedding sets provided. |



※ The photos are for illustrative purposes only.
Facilities and layouts are subject to change without notice.

Nikkou Arai Student Dormitory

Within walking distance of school! Great environment! Convenient transportation and shopping!

| | |
|--------------------|---|
| Location | Araiakushi-mae Sta. 2mins by walking |
| Building Structure | Reinforced concrete construction, 3 stories |
| Room | Single room (total 8 rooms, 4 female-only and 4 male-only) 8m ² ~12m ² |
| Share Area | Kitchen, Shower Room, Toilet |
| Facility | Room: bed, desk, chair, refrigerator, curtain, AC, Wardrobe Share : microwave, laundry machine, WIFI |
| Access To School | 6 minutes to Takadanobaba Station, 23 minutes to Shibuya Station, 20 minutes to Harajuku, 16 minutes to Ikebukuro Station, 9 minutes to Seibu Shinjuku Station |
| Notice | *Utilities (water, gas, electricity) and internet fee are included *Fees for entrance, facility management, and cleaning are paid at the first time only, no renewal fees.*Free bedding sets provided. |



map



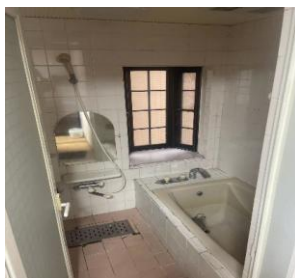
single



large single



kitchen



bath room and toilet



station



1F floor plan



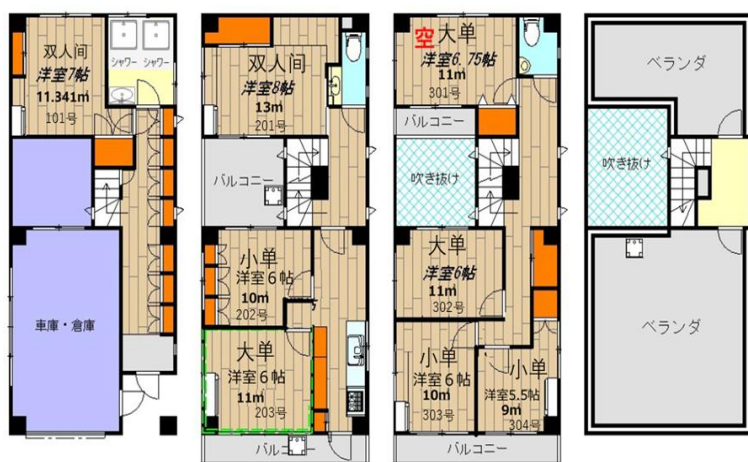
2-3F floor plan

※ The photos are for reference only, please refer to the actual check-in situation.

Ikebukuro 3 tyoume

Quiet enviroment! Convenient for commute, transportation and shopping!

| | |
|-----------------|---|
| TOWN AREA | Ikebukuro 3 tyoume (Toshima ward) |
| STRUCTURE | Reinforced concrete construction, 3 stories |
| ROOM | single room (4 rooms) 、double Room(4 rooms) room size:9~13m ² |
| COMMON AREA | kitchen, bathroom, roof balcony, toilet, wash basin, storage space |
| FACILITIES | room : bed, desk,chair, A/C, closet,refrigerator common area : microwave, washing machine, Internet,kettle, |
| NEAREST STATION | Yamanote Line "Ikebukuro" Station 8 minutes; JR 3 lines, subway 3 lines, Tobu/Seibu All 8 lines available |
| COMMUTE | From Ikebukuro sta : can walk to Ikebukuro campus/ 4min to Takadanobaba sta / 13min to Harajuku sta/ 15min to Shibuya sta/ 6 min to Shinjuku sta |
| NOTE | *Utilities (water, gas, electricity) and internet fee are included *Fees for entrance, facility management, and cleaning are paid at the first time only, no renewal fees.*Free bedding sets provided. |



※Photos are for illustrative purposes only. Room facilities and layouts are subject to change without notice.

Nikkou Nakai Student Dormitory

Within walking distance of school! Great environment! Convenient transportation and shopping!

| | |
|--------------------|---|
| Location | Nakai Sta. 4mins by walking |
| Building Structure | Three-story wooden building |
| Room | Single room (total 2 rooms) 7.03㎡~8.48㎡ |
| Share Area | Kitchen, Shower Room, Toilet |
| Facility | Room: bed, desk, chair, refrigerator, curtain, AC, Wardrobe Share : microwave, laundry machine, WIFI |
| Access To School | Takadanobaba Station 4 minutes, Seibu Shinjuku Station 7 minutes, Ikebukuro Station 16 minutes, Harajuku Station 20 minutes, Shibuya Station 23 minutes |
| Notice | *Utilities (water, gas, electricity) and internet fee are included *Fees for entrance, facility management, and cleaning are paid at the first time only, no renewal fees.*Free bedding sets provided. |



map



entrance



kitchen



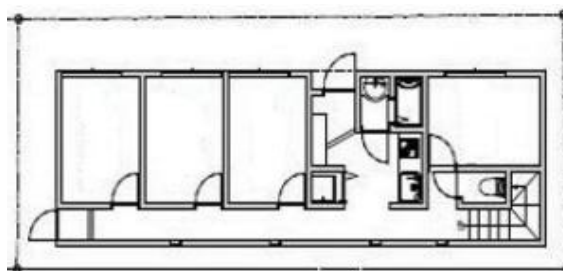
bedroom



shower room



toilet



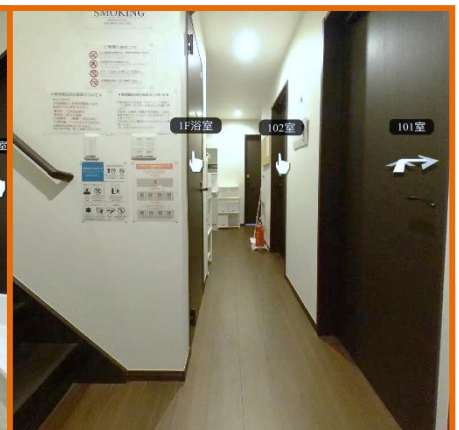
floor plan

※ The photos are for reference only, please refer to the actual check-in situation.

SA—CROSS TORITSUKASEI 3

QUIET ENVIRONMENT!!CONVENIENT TO GO ANYWHERE!

| | |
|--------------------|---|
| LOCATION | TORITSUKASEI (NAKANO-KU) |
| BUILDING STRUCTURE | 2-story wooden house |
| ROOM TYPE | 10 x single occupancy room room size: 7㎡ |
| COMMON FACILITIES | 2 wash basins 2 bathrooms 2 toilets 2 washing machines with a dryer machine 2 kitchens |
| EQUIPMENT | In each room: a bed, a desk, a TV, an A/C, a refrigerator shared: microwave ovens, a rice cooker, free Internet |
| TO THE STA. | 8-min. walk to the south exit of Seibu Shinjuku Line Toritsukasei Station |
| TO SCHOOL | From Toritsukasei Sta. to Takadanobaba Sta.11min./Seibu Shinjuku Sta.14min./ Ikebukuro Sta.22min./Harajuku Sta. 25min./Shibuya Sta. 27min. |
| NOTICE | *Utilities (water, gas, electricity) and Internet fee are included *Fees for entrance, facility management, and cleaning are paid at the first time only, no renewal fees. *Free bedding sets provided. |

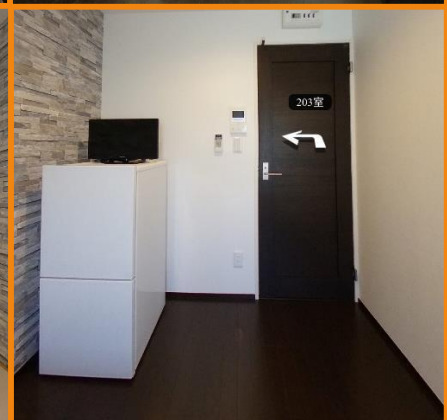
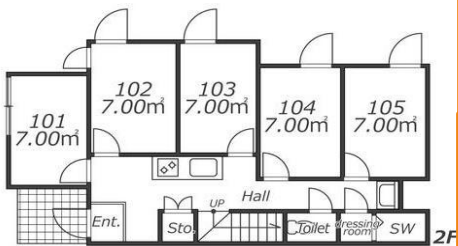
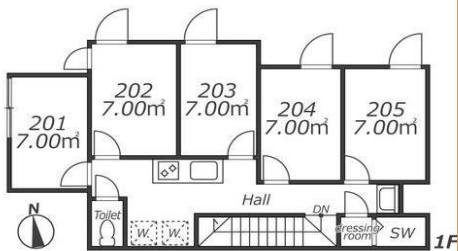


※ The photos are for illustrative purposes only.
Facilities and layouts are subject to change without notice

SA—CROSS TORITSUKASEI 4

QUIET ENVIRONMENT!!CONVENIENT TO GO ANYWHERE!

| | |
|--------------------|---|
| LOCATION | Toritsukasei (Nakano-ku) |
| BUILDING STRUCTURE | 2-story wooden house |
| ROOM TYPE | 10 x single occupancy room room size: 7㎡ |
| COMMON FACILITIES | 2 wash basins 2 bathrooms 2 toilets 2 washing machines 2 dryer machines 2 kitchens |
| EQUIPMENT | In each room: a bed, a desk, a TV, an A/C, a refrigerator shared: microwave ovens, a rice cooker, free Internet |
| TO THE STA. | 6-min. walk to the south exit of Seibu Shinjuku Line Toritsukasei Station |
| TO SCHOOL | From Toritsukasei Sta. to Takadanobaba Sta.11min./Seibu Shinjuku Sta.14min./ Ikebukuro Sta.22min./Harajuku Sta. 25min./Shibuya Sta. 27min. |
| NOTICE | *Utilities (water, gas, electricity) and Internet fee are included *Fees for entrance, facility management, and cleaning are paid at the first time only, no renewal fees. *Free bedding sets provided. |



※ The photos are for illustrative purposes only.
Facilities and layouts are subject to change without notice.

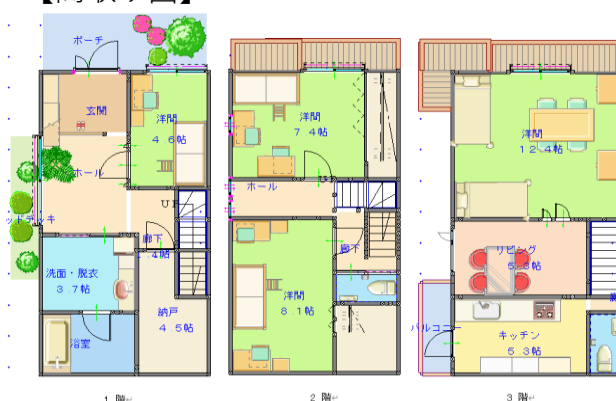
HIGASHI SHINJUKU (women's dormitory)

QUIET ENVIRONMENT!! CONVENIENT TO GO ANYWHERE!!

| | |
|--------------------|---|
| LOCATION | Shinjuku |
| BUILDING STRUCTURE | three-story wooden building |
| ROOM TYPE | 4rooms max.21㎡ min.8㎡ |
| COMMON AREA | a bathroom, 2 toilets, a kitchen, living room |
| EQUIPMENT | in each room: bed(s), desk(s), chair(s), an A/C , FREE Wi-Fi shared : a microwave, a laundry machine, a refrigerator |
| TO THE STA. | 6-min. walk to (Oedo Line/ Fukutoshin Line) Higashi Shinjuku Station |
| TO SCHOOL | Train (from Higashi Shinjuku Station) : Oedo Line「Tochomae Station(ISHI Shinjuku Language school)」5minutes・Fukutoshin Line「ikebukuro Station」7minutes・Fukutoshin Line「shibuya Station」10minutes・Fukutoshin Line「nishiwaseda Station(ISHI Takadanobaba Language school)」1minutes・Fukutoshin Line「Meiji-Jingumae Station」11 minutes |
| NOTICE | *Utilities (water, gas, electricity) and internet fee are included *Fees for entrance, facility management, and cleaning are paid at the first time only, no renewal fees. *Free bedding sets provided. |



【間取り図】

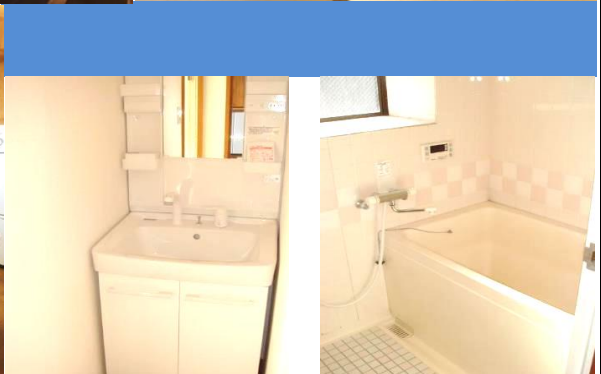


※ The photos are for illustrative purposes only.
Facilities and layouts are subject to change without notice.

lidabashi(men' s dormitory)

Good environment! Easy access to JR and Tokyo Metro lines.

| | |
|-----------------|--|
| Area | lidabashi(Shinjuku-ku) |
| Structure | Steel construction, 6 floors above ground, 4 floors entrance (Duplex, 3 floors) * |
| Rooms | 5rooms Room area max.13m ² min.8m ² |
| Common area | Dining kitchen, bathroom, toilet (2 places) |
| Facilities | Room : bed, desk, air conditioning, fridge, free wifi Shared : kitchen (3 burners), microwave, washing machine |
| Transportation | JR Sobu Line, Oedo Line, Tozai Line, Yurakucho Line, Namboku Line, lidabashi Station (7 minutes walk) * |
| Means to School | Train (from lidabashi Station) : Oedo Line 「Tochomae Station(ISI Shinjuku Language school)」 12minutes • Tozai line Takadanobaba station 7minutes Yurakucho Line 「ikebukuro Station」 12minutes • 「JR shibuya Station」 16minutes (1 transfer) • 「JR harajuku Station」 17minutes (1 transfer) |
| Remarks | *Costs for utilities (water, gas, electricity) and internet are included. *There are no renewal costs for dormitory fees, facility management fees, and cleaning fees. *Bedding set provided free of charge. |

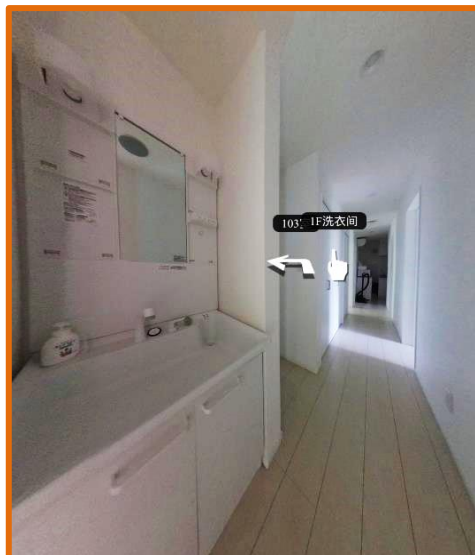
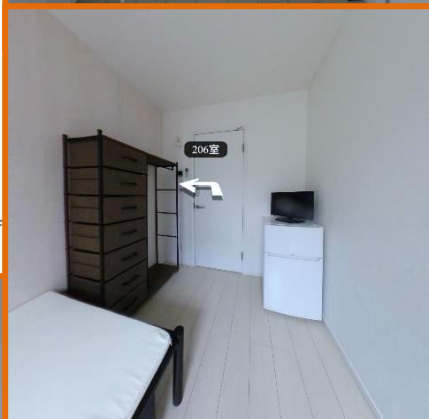


※ Photographs are for illustrative purposes only. Actual room facilities, layout, etc. may vary prioritizing local condition.

SA—CROSS NOGATA 2

QUIET ENVIRONMENT!! CONVENIENT TO GO ANYWHERE!

| | |
|--------------------|---|
| LOCATION | Nogata (Nakano-ku) |
| BUILDING STRUCTURE | 2-story wooden house |
| ROOM TYPE | 20 x single occupancy room room size: 7m ² |
| COMMON FACILITIES | 2 washbasins 4 bathrooms 4 toilets 6 washing machines 6 dryer machines 2 kitchens |
| EQUIPMENT | In each room: a bed, a desk, a TV, an A/C, a refrigerator shared: microwave ovens, a rice cooker, free Internet |
| TO THE STA. | 10-min. walk to the south exit of Seibu Shinjuku Line Nogata Station |
| TO SCHOOL | From Nogata Sta.to Takadanobaba Sta.10min./Seibu Shinjuku Sta.13min./ Ikebukuro Sta.21min./Harajuku Sta. 24min./Shibuya Sta. 26min. |
| NOTICE | *Utilities (water, gas, electricity) and Internet fee are included *Fees for entrance, facility management, and cleaning are paid at the first time only, no renewal fees. *Free bedding sets provided. |

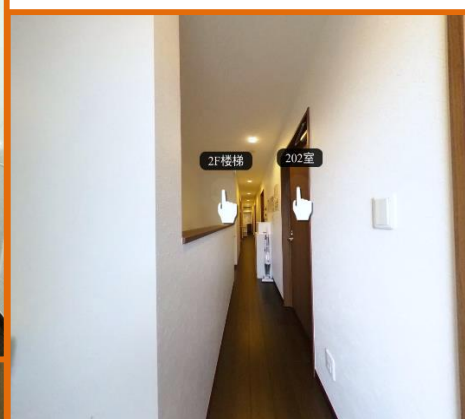
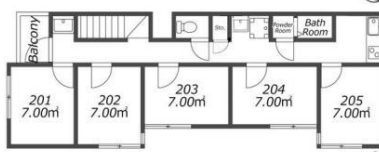
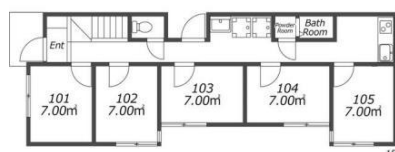


※ The photos are for illustrative purposes only.
Facilities and layouts are subject to change without notice.

SA—CROSS NOGATA 6

QUIET ENVIROMENT! CONVENIENT TO GO ANYWHERE!

| | |
|--------------------|---|
| LOCATION | Nogata (Nakano-ku) |
| BUILDING STRUCTURE | 2-story wooden house |
| ROOM TYPE | 10 x single occupancy room room size: 7㎡ |
| COMMON FACILITIES | 3 washbasins 2 bathrooms 2 toilets 3 washing machines 3 dryer machines 2 kitchens |
| EQUIPMENT | In each room: a bed, a desk, a TV, an A/C, a refrigerator shared: microwave ovens, a rice cooker, free Internet |
| TO THE STA. | 7-min. walk to Seibu Shinjuku Line Nogata Station |
| TO SCHOOL | From Nogata Sta.to Takadanobaba Sta.10min./Seibu Shinjuku Sta.13min./ Ikebukuro Sta.21min./Harajuku Sta. 24min./Shibuya Sta. 26min. |
| NOTICE | *Utilities (water, gas, electricity) and Internet fee are included *Fees for entrance, facility management, and cleaning are paid at the first time only, no renewal fees. *Free bedding sets provided. |

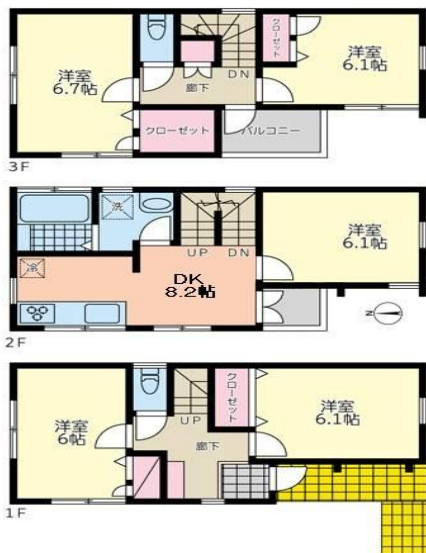


※The photos are for illustrative purposes only.
Facilities and layouts are subject to change without notice.

KITAIKEBUKURO (women's dormitory)

PEACEFUL!!BLESSED ENVIRONMENT!!CONVENIENT LIFE!!

| | |
|----------------------------|--|
| Location | Ikebukuro |
| Structure | three-story wooden building |
| Room | 5rooms max.12㎡ min.10㎡ |
| Common Area | Bathroom, two toilet, kitchen and living room |
| Facilities | Room: bed(s), desk(s), chair(s), air-conditioning, free Wifi Shared: a microwave, a laundry machine, Refrigerator |
| Transport | 13 minutes walk from Ikebukuro Station (JR Yamanote LINES, Marunouchi Line, Yurakucho Line, Fukutoshin Line) 6 minutes walk from Kita-Ikebukuro Station (Tobu Tojo Line) |
| TO SCHOOL (station) | 18 minutes walk from ISI Ikebukuro Language school. Train (from Ikebukuro Station): JR Shinjuku Station 6minutes . Takadanobaba Station 4 minutes, Shibuya Station 15 minutes. Harajuku Station 13 minutes. |
| Remarks | *Costs for utilities (water, gas, electricity) and internet are included. *There are no renewal costs for dormitory fees, facility management fees, and cleaning fees. *Bedding set provided free of charge. |



※ The photos are for illustrative purposes only.
Facilities and layouts are subject to change without notice.